



info@mykilada.com

M: +30 6977 245045 · T: +30 21 0361 4255

mykilada.com



KILADA

Country Club | Golf | Residences

Greece

A PLACE TO CALL HOME



KILADA COUNTRY CLUB, GOLF & RESIDENCES

SOME CALL IT PARADISE. NOW YOU CAN CALL IT HOME

Welcome to Kilada, a secret well-kept by those in the know. Set in the most perfect of locations, amongst the olive groves overlooking a stunning traditional fishing village, with sublime views to the Aegean to the Peloponnese. It is a place of seclusion yet just a short way from Porto Heli and the Greek Riviera. It is a place of understated elegance enjoyed by discerning visitors the world over.

With an exclusive Beach and Country Club, and one of the finest golf courses on the Eastern Mediterranean, Kilada with its open hills, ancient ruins, mountain biking and sailing, is the perfect place to call home. A place where you can do anything you want. Or nothing at all.

This summer we are pleased to release our membership programme, offering you the chance to make this your home and enjoy benefits including preferential choice of a superior lot where your private villa will be built. Membership options for Kilada owners include Platinum and Founder memberships, enjoying the highest level of privileges and services available at the Golf and Country Club.





This is my Kilada



DO ANYTHING YOU WANT. OR NOTHING AT ALL.

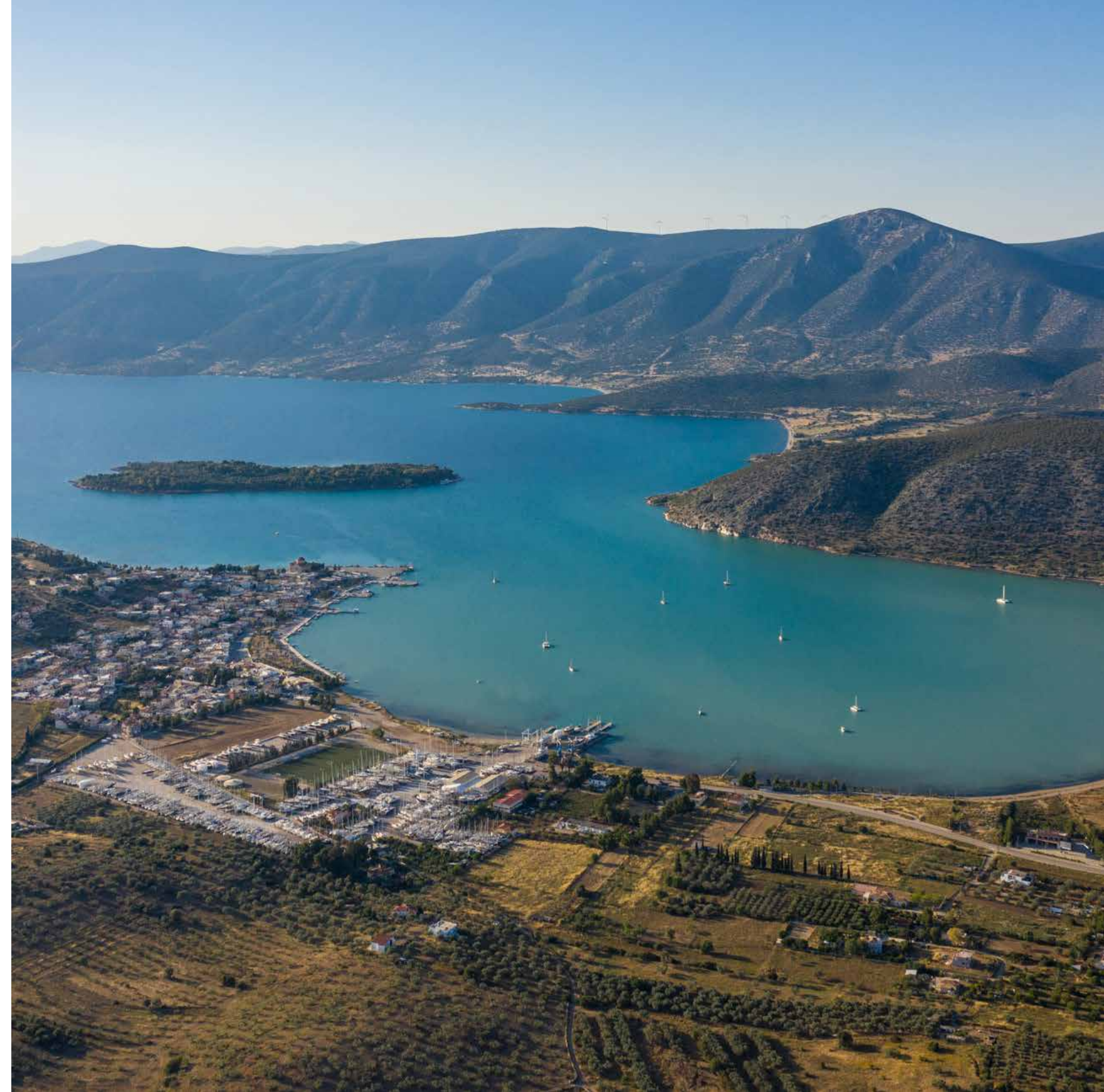
The dramatic panoramas, enjoyed by residents and guests alike, play host to a location and an unmatched lifestyle, one that is ideal for families, or those looking to simply relax and enjoy the luxurious facilities.

From the best in sailing and fishing, diving and cycling, from village charms to UNESCO sites, the cosmopolitan islands of Spetses and Hydra, the sophistication of Amanzoe and the social buzz of Nikki Beach Resort, to the privacy of your home, choice abounds.

The Country Club is one of the things that makes Kilada an integral part of the region. It offers sweeping views from its terraces over the golf course to the village, the crystal blue sea and islands beyond. Enjoy the pool and tennis courts, gym and spa alongside a choice of restaurants, both in and outdoors, relaxation areas and bar.

A Country Club needs a golf course and Kilada is proud to have its own Championship Course. An 18 hole, par 72, Jack Nicklaus Signature Course whose greens are set in the rolling hillside and fairways take you on a journey through the ancient olive groves.

The Beach Club offers private coves, each with crystal blue waters, swimming, diving, sailing and snorkelling as well as a relaxed restaurant, café and bar. The perfect place to set sail from, or just while away the day and enjoy the beautiful sunsets.





CLOSE TO EVERYTHING. FAR FROM IT ALL.

Athens International Airport is perfectly located with fast and direct access from London, Paris, Zurich and Dubai and all the main European cities. From there the choice is yours from a 25 minute trip by helicopter, direct boat service taking just 1hr 40 minutes or a charming coastal drive that brings you to your door in about two hours.



A JOURNEY WORTH TRAVELLING.

With its peninsular setting, Kilada offers the perfect combination of dramatic landscapes, beautiful coves and historic sites. Take in views from breath-taking mountain roads or explore the rugged coastline.

Finding the true heart of Greece, a place of wild and unspoilt coasts, of ancient history and modern luxuries, is surprisingly simple.



A photograph of an elderly couple standing on a gravel road next to a red convertible car. The man is leaning against the car, and the woman is standing next to him, gesturing towards the landscape. The background features a mountain range under a sunset sky with a bright sun on the right side.

JUST A TWO HOUR DRIVE FROM ATHENS LIES A PLACE SO
EXCLUSIVE THAT ONLY THOSE IN THE KNOW, KNOW.

For me the drive is my favourite bit

KILADA. A TRADITIONAL FISHING VILLAGE.

Charming and steeped in history, Kilada is a picturesque and sedate fishing village, unchanged by the passage of time. Despite its size, Kilada is noted for its traditional ship building yards which not only build, and care, for the traditional wooden fishing boats favoured in the region, but also cater to the yachting community with the marina providing the ideal mooring spot.

Stroll around the waterfront with its café's and bars, all set against the village backdrop dotted with churches, or visit the local favourite, Lepitsa for its acclaimed beach and taverna. Local retailers ensure everything is to hand including grocery stores, newsagents and bookshops.

It is this unique mix of local life and international glamour that has seen the area titled the Greek Riviera, with Porto Heli, Kilada and the surrounding area its crowning glory. The chosen location for those wanting a second home that is both understated and elegant. Home to shipping dynasties and royalty alike, luxurious villas are nestled in the hills overlooking exclusive private islands. A land of fable, today it is one of the most exclusive destinations in Europe, boasting a history that spans back some 5,000 years taking in the ancient civilisations of the Mycenaean, Spartans, Byzantines and Romans.

K







WHERE FAMILY TAVERNAS SERVE THE BEST LOCAL INGREDIENTS.

From great coffee and delicious pastries to the catch of the day, fresh off the boats, Kilada is a heaven for those who enjoy delicious, fresh and honest cuisine. Explore its acclaimed and affordable fish restaurants, with many dishes inspired by the local red prawns, or sit back and enjoy a glass of local wine in one of the many family owned tavernas that look out over the bay.





WHERE SAILING, YACHTING & WATER SPORTS ARE SECOND TO NONE.

As befits a coastal destination with a proud maritime history, today Porto Heli and Kilada are an essential port of call for the many super yachts that tour the Mediterranean. For those resident in the area, it is a place to spend many happy days at the tiller of your yacht, to enjoy the annual regattas or simply spend the day visiting the many tranquil private coves that define this glorious coastline.

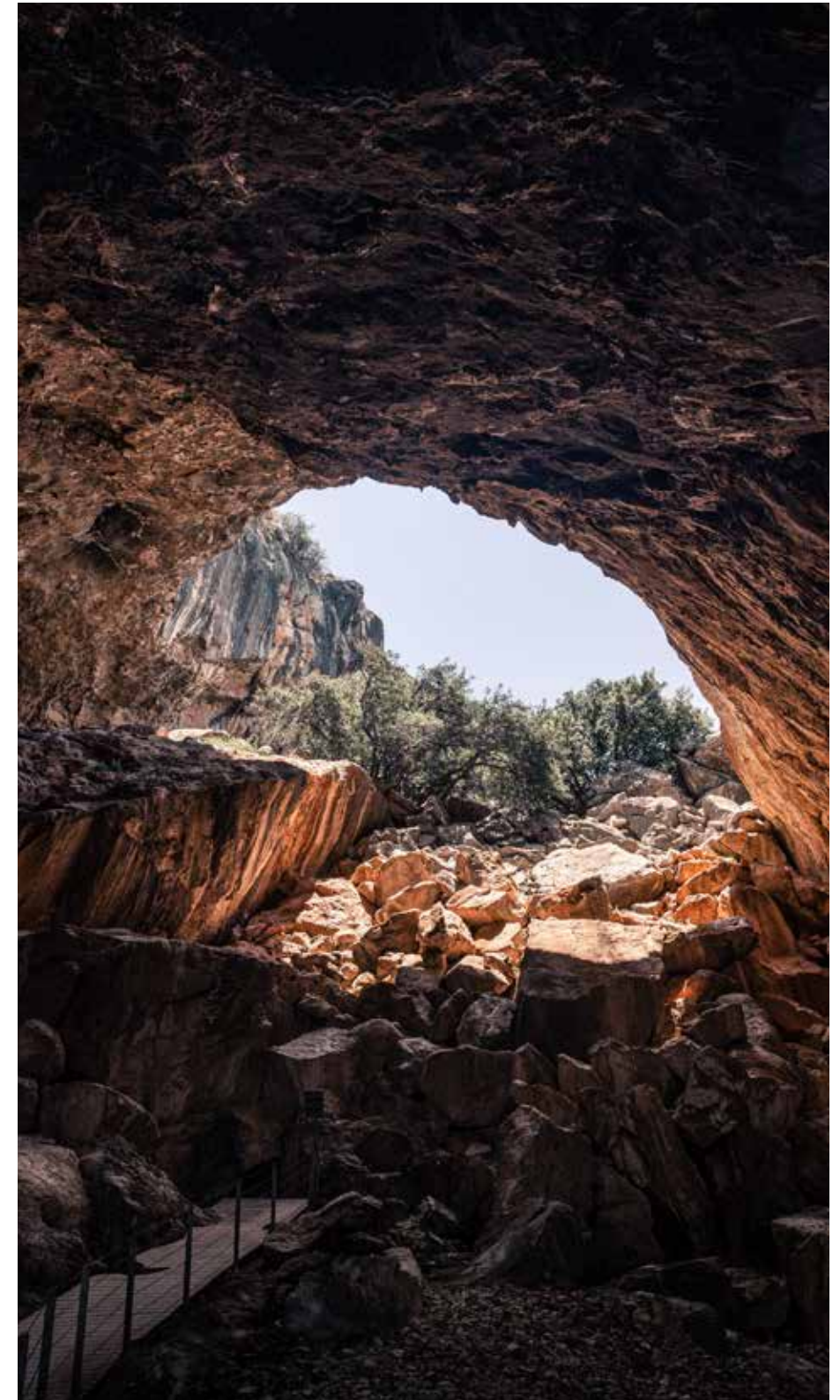






WHERE TURQUOISE WATERS MEET OLIVE GROVES.

With its peninsular setting, living at Kilada offers the perfect combination of dramatic landscapes, beautiful coves and historic sites. Whether your interest is nature, history or culture, there is so much to explore. Cosmopolitan yet village like, family friendly and a culinary destination, a lovely bay and beaches. Kilada really has it all.



AT ONE WITH NATURE. AT HOME WITH HISTORY.

Inland, explore the pine woods of Bisti and the Katafyki ravine or explore the rugged coast and discover the Fragchthi and Didyma Caves. Epidaurus remains one of the most famous ancient sites in Greece with its famed amphitheatre, which hosts part of the annual "Athens Festival".

As befits such a cradle of civilisation, UNESCO World Heritage sites are found across the Peloponnese.





THE HISTORIC ISLAND OF SPETSES.

From your new home it is just ten minutes drive to the port, gateway to the car-free islands of Spetses and Hydra, which exert a magical allure. Spetses retains to this day its historic character with its grand mansions, lovely harbour, horse drawn carriages and buzzing cultural centre of Dapia.



THE STUNNING ISLAND OF HYDRA.

Elegant and charming, Hydra is a favoured retreat for the rich and famous, from Maria Callas and Aristotle Onassis to Sophia Loren. Its stone mansions, alleys, churches and many museums, not to mention a selection of beaches, make it a much-favoured destination.



NAMED THE HAMPTONS OF GREECE BY VANITY FAIR.

This is my Kilada





WELCOME TO KILADA COUNTRY CLUB, GOLF & RESIDENCES.

Kilada is more than a unique development, it is a destination that is a reflection of its glorious setting, offering the finest facilities in the region and an important part of the wider community that make the Peloponnese their home.

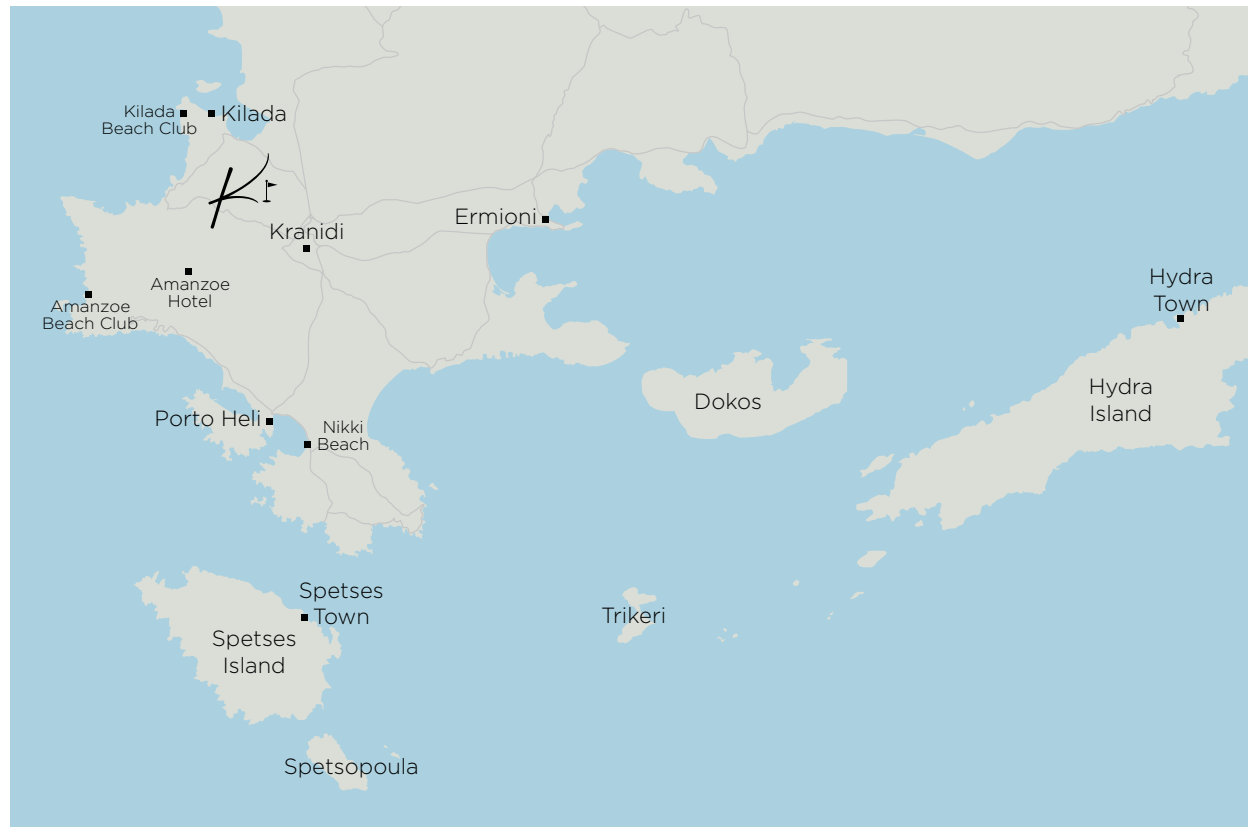
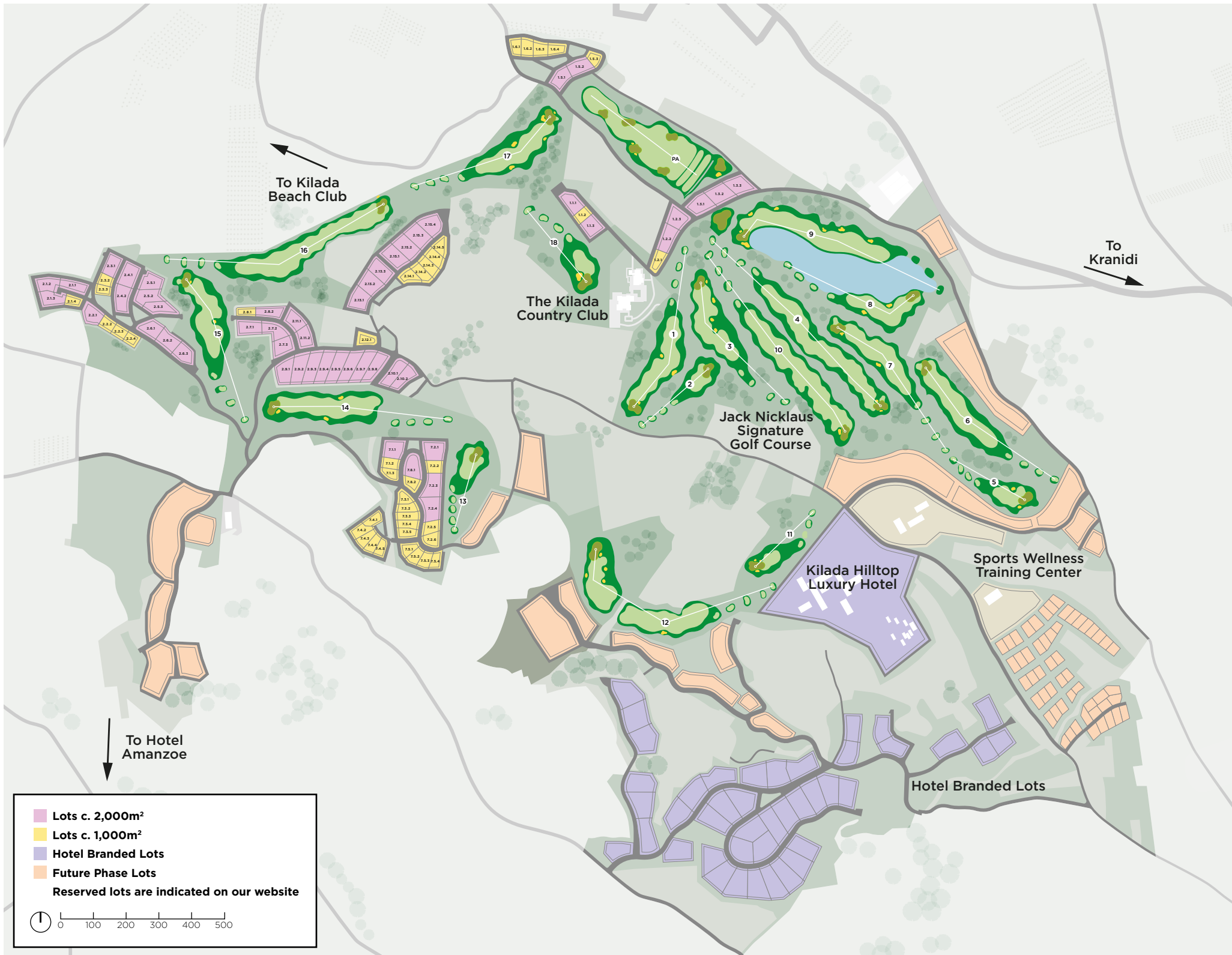
Set in nearly 250 hectares of rolling land, the Country and Beach Clubs offer extensive sports, recreation and leisure facilities, private function areas for special occasions and an unmatched quality of service.

The beautiful Country Club, designed by one of Greece's leading architects, makes intelligent use of natural materials to immediately establish it as part of the local landscape. Inside open, airy and light filled spaces give space to breathe whilst floor to ceiling windows, wrap-around terraces and covered walkways make the most of the dramatic views.

Home to the spa and pool, with lounges, bars and dining areas, it is a place for you to meet, socialise and enjoy. To pass time with friends, to enjoy a fine meal, or just to relax and soak up the views.

Kilada takes its name from the local fishing village. Meaning 'Valley' in Greek it emphasizes that the beauty is not only to be found in the sea but in the wide open valleys that lead down to the shore. It is in these valleys that Kilada, with its Country Club, Golf and Residences, will make its home.

K



**GROWING WITH YOU.
THE FUTURE OF KILADA.**

Kilada will continue to introduce new services and features that are of value to your Club and community. Planning is underway for the Kilada Hilltop Hotel, a boutique hotel set high in the valley to cater for additional guests and the occasional visitor and a dedicated Wellness and Training centre to complement the Country Club facilities.

YOUR EXCLUSIVE KILADA COUNTRY CLUB.

Kilada offers a home away from home for its residents, and a welcoming destination for its members. A place where you always feel welcome, and never intruded upon, this is the essence of a Country Club at its very best.

Central to this is our commitment to privacy and absolute discretion, ensuring that the choice is yours, whether it is to explore all that is on offer, or do nothing at all. Which is why we are proud to say This is My Kilada.







SOCIALISE & ENJOY THE BEST IN MEDITERRANEAN CUISINE.

True to its cultural heritage and with its own distinctive dishes, Kilada offers a superb choice of dining options. From the freshest catches brought in by the fisherman to the village, to the finest organic produce grown locally, the cuisine on offer is of the highest standards. Kilada, with its Club and attentive staff, is the perfect place to host an event, whether business or pleasure. Hold a meeting in a dedicated boardroom, or collaborate with us to host that memorable celebration, whether in one of the stylish private function rooms or in your own home.



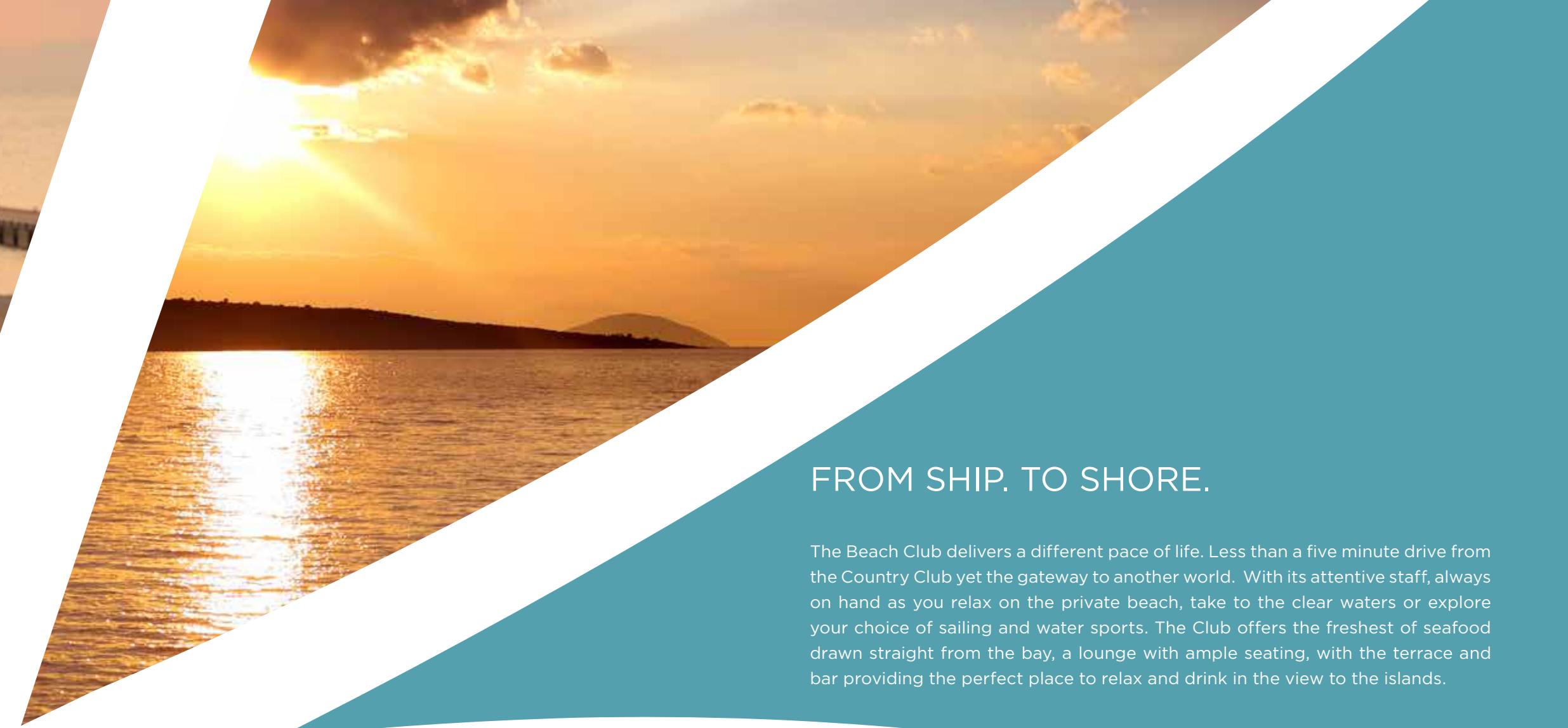


EXERCISE & EXPLORE. OR RELAX & UNWIND.

From a game of tennis on one of the Country Club's clay courts, a dip in the pool, to a round of golf on the Jack Nicklaus Signature Course, an active lifestyle for you, family and friends is on hand, should you choose it. Those wanting to go further afield can explore the stunning coastal and cliff paths or take to the hills by horse or bicycle.

Whether you want to relax and wind down at the end of the day or simply look your best for that special occasion our spa provides a haven of calm. With a holistic view on wellbeing, explore the spa and sauna and our range of treatments.





FROM SHIP. TO SHORE.

The Beach Club delivers a different pace of life. Less than a five minute drive from the Country Club yet the gateway to another world. With its attentive staff, always on hand as you relax on the private beach, take to the clear waters or explore your choice of sailing and water sports. The Club offers the freshest of seafood drawn straight from the bay, a lounge with ample seating, with the terrace and bar providing the perfect place to relax and drink in the view to the islands.

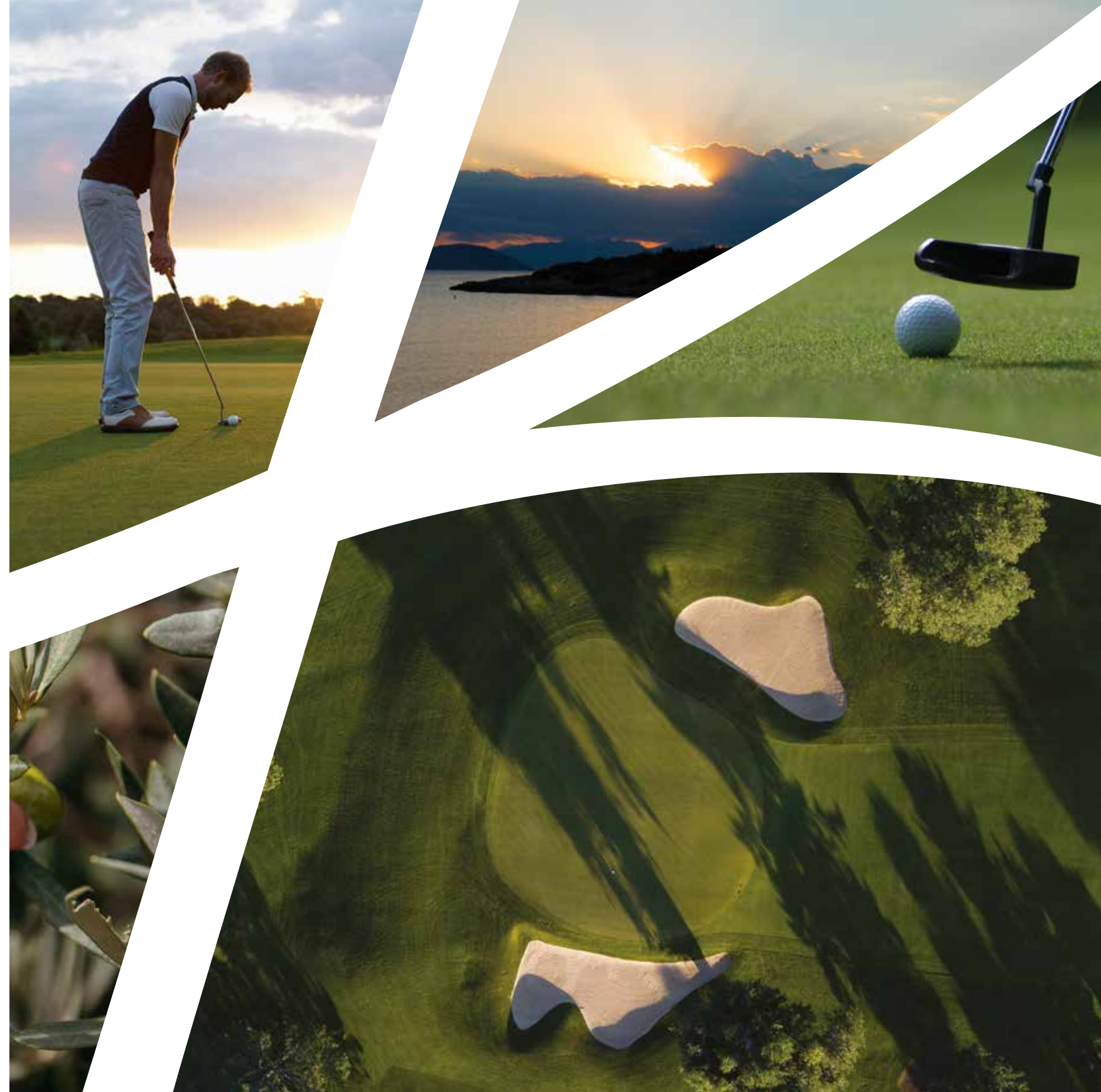


HOME TO THE ONLY JACK NICKLAUS SIGNATURE GOLF COURSE IN THE EASTERN MEDITERRANEAN.

With the perfect year-round climate, a setting in the olive groves and hills of Kilada, views out to the sea and the islands beyond, our Jack Nicklaus Signature course is one of a kind.

The championship 18-hole, Par 72 course with its views and lake bordered by the eighth and ninth holes, is an inspiration in design from Jack Nicklaus. He has made the course a part of the landscape and you can be proud to have the only Signature course in the whole of the Eastern Mediterranean.

With the addition of putting green, pro shop and driving range, Kilada is something new, not a golf resort, but a home for those who enjoy playing golf as much as those who enjoy a day of sailing.





“ Since I first stepped foot on the site for Kilada and to today, I can never forgot the property’s beauty. The golf course site, which sits above a fishing village on the Peloponnese Peninsula, is spectacular.

The Kilada course will play its way through existing valleys, nestled among olive groves, overlooking the Sea. The course is being routed in a way to use the natural contours as much as possible, preserve the existing vegetation, and open up the wonderful vistas. ”


Jack Nicklaus



FOR PLEASURE. FOR PROFESSIONALS.

The first tee is set below the Country Club where you will find the Pro Shop and our team of friendly staff ready to provide advice or lessons. Enjoy the 18-hole signature course and putting green at your leisure.



A person is riding a mountain bike on a grassy hillside. The rider is silhouetted against a bright sunset sky. The background features a range of mountains under a hazy, golden light. The foreground is filled with tall, green grass.

THEY SAY THE JACK NICKLAUS SIGNATURE COURSE
IS ONE OF THE BEST IN THE WORLD. PERSONALLY,
I PREFER THE MOUNTAIN COURSE.

This is my Kilada



MY DREAM HOME. MY KILADA.

INTRODUCING THE SIGNATURE VILLA COLLECTION

Each of our 90 lots in the first phase of the development, ranging in size from just below 1,000m² to more than 2,000m², has been carefully selected to ensure that your home offers the utmost in privacy whilst making the most of the exceptional views enjoyed from both the villa and its grounds. Views that take in the deep and rich greens of olive grove, golf course and valley, to the blues of the sea and the towering hills and islands in the distance, as well as the turquoise waters of the bay of the picturesque village of Kilada, filled with its traditional fishing boats.

Greece is the true inspiration for the showcase villa designs, which use natural materials, the beautiful local stone and wood, to create a feeling of oneness with the setting.

Designs will be customised to make your villa your unique home. What they all share is a promise of peace and seclusion, of being at one with nature whilst enjoying everything that Kilada has to offer.

KILADA FOUNDERS.

Kilada Founder Membership eligibility is restricted to the owners of lot sizes ranging from 1,800m² to nearly 2,300m².

These lots are perfect for villas of 550m² (primary areas), as exemplified in the designs of our signature architects. The gross villa areas for these lots range from 600m² to 1,300m².

Founders are entitled to the following Club privileges:

- Founder Member Clubhouse Plaque
- Private Named Locker Plaque
- Free access to Club Facilities and Golf Course (no green fees)
- Priority Booking for Golf Course tee times (1st level)
- Priority Bookings for all Club Facilities (1st level)
- Access to VIP Club Lounge area
- Concierge Service
- Founders Preferred Pricing
- Courtesy Golf Carts (40 p.a.)
- Courtesy Range Balls (unlimited)
- Green Fee Vouchers for Guests (30 p.a.)



PLATINUM MEMBERS.

Platinum Membership is available to owners of lots ranging in size from 900m² to nearly 1,300m².

These lots are ideal for the construction of villas of c. 250m² (primary areas) whilst gross villa areas can reach up to 650m².

Platinum members are entitled to the following Club privileges:

- Free access to Club Facilities and Golf Course (no green fees)
- Priority Booking for Golf Course tee times (2nd level)
- Priority Bookings for all Club Facilities (2nd level)
- Access to VIP Club Lounge area
- Concierge Service
- Platinum Preferred Pricing
- Courtesy Golf Carts (20 p.a.)
- Courtesy Range Balls (unlimited)
- Green Fee Vouchers for Guests (15 p.a.)





SIGNATURE STYLE OF YOUR OWN.

Leading architectural practices have been commissioned to each create a villa in a signature style. Large open areas, feature fireplaces, cool internal courtyards, atria and stunning full height sliding window walls, flood the interiors with the tranquil light of the Peloponnese. Outside, extensive terraces, pergolas and walkways and your private pool seamlessly blend inside and out, with each villa set in hard and soft landscaped gardens complete with discrete covered parking.

Ranging from traditional to modern, all are designed for a contemporary lifestyle. With the full signature villa collection unveiled this Autumn, the choice will be all yours when it comes to your home.





THE SPIRAL VILLA BY OMNIVIEW.

Created by the team behind Athens' landmark One Kleomenous, the Spiral Villa is a showcase in design. It combines a strong sense of centricity with flowing connections to its natural environment.

Conceived on the model of the ancient Greek home, the geometry of the spiral gives structure to the master plan as a sequence of activities and spaces. The flow of the spiral takes one on a journey from private to public space, all of which subtly interact, and culminates in the stunning centrepiece. An abstraction of the ancient Greek 'Hestia', at the Villa's heart, a beautifully designed open space with terraces and tranquil waters, open to the air and to the entertainment spaces, and all set in the shade of a single, majestic, olive tree.

Fluid, yet offering clear lines between public and private, the Spiral Villa offers a final feature. Bringing to the fore Omniview's interpretation of Greece's proud traditional houses, the top floor is an expansive private domain, an extensive suite with panoramic views from its full height windows and terraces and its own private entrance.

The Spiral Villa takes inspiration from the Greek architectural pantheon and yet looks firmly to the future as it draws on the finest natural materials and the most modern construction techniques. It is a villa without compare.

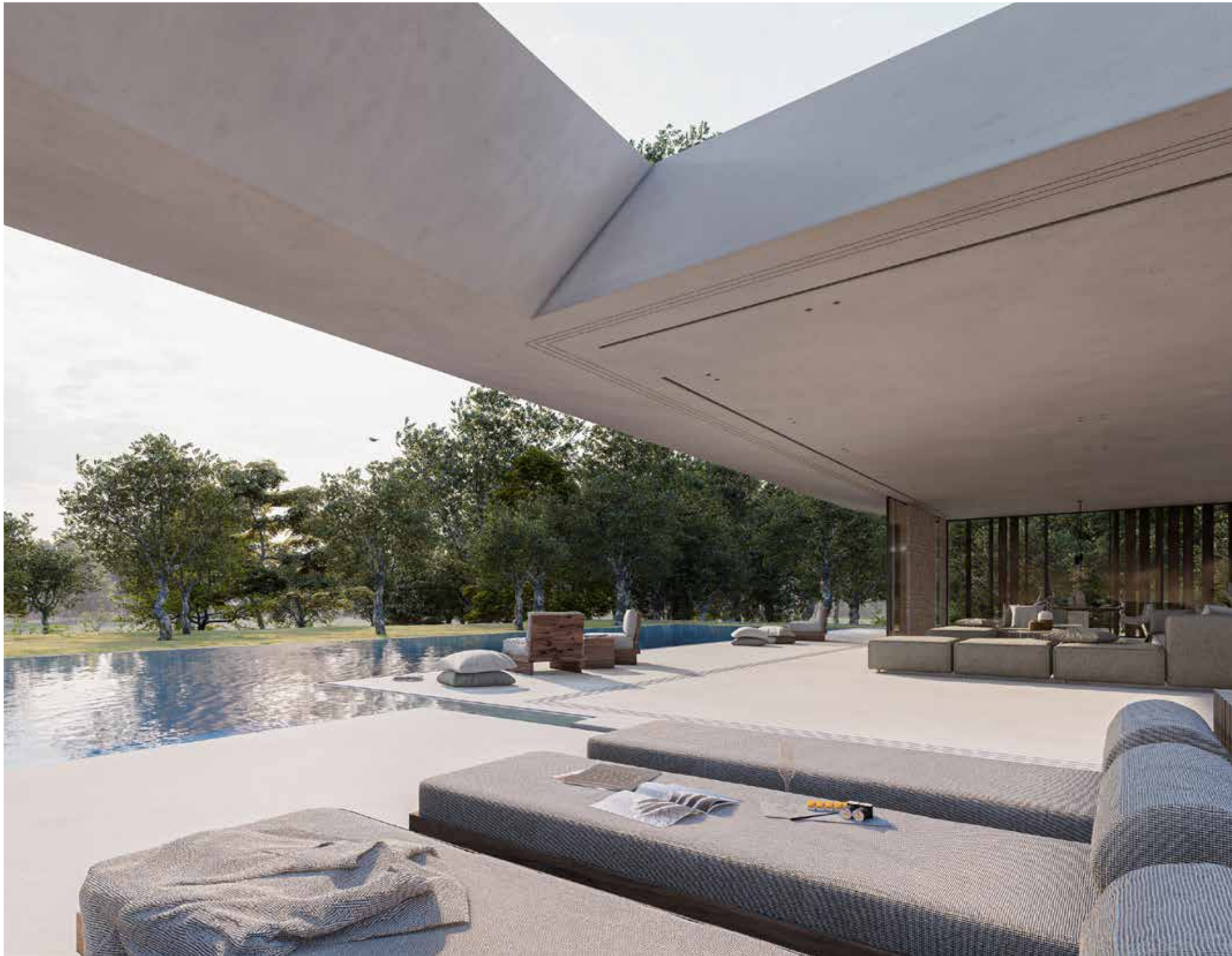
Internal Living: 506m² (primary areas) + 790m² (secondary areas)

Covered External Living: 437m²

External living: 741m²

Outdoor swimming pool: 201m²

Outdoor jacuzzi: 40m²







SIGNATURE VILLA

BY DZA ARCHITECTS.

An exclusive preview into the Kilada lifestyle, this signature villa draws from the rich architectural traditions of Spetses and Argolida and interprets them in a distinctively modern home. The architects have sought to accentuate the beauty of the rolling landscape of Kilada hills. The small slope of the site is used to raise the living areas, on a 'piano nobile' in the Spetses tradition. Large sky-frame floor to ceiling windows afford beautiful vistas to the South, elevated from the level of the street. To the rear, the living areas open to a central pool court, flanked on each side by the dining and bedroom wings. Garden views connect seamlessly to the Golf Course to the northwest, visually expanding the domain of the villa.

Internal Living: 550m²

Covered External Living: 122m²

External living: 152m²

Outdoor swimming pool: 120m²









PURCHASING PROCESS

The purchasing process is straightforward. First select the lot that you prefer, then enter into a reservation agreement to remove the lot from the market and, finally, complete the purchase transaction acquiring freehold ownership of the property.

Then you are free, using one of our signature architects or your own architect, to design your villa, bespoke to your requirements. You also have the choice to enter into a turn-key construction agreement with the Developer to undertake the construction of your villa in accordance with the design and exact specifications agreed upon.

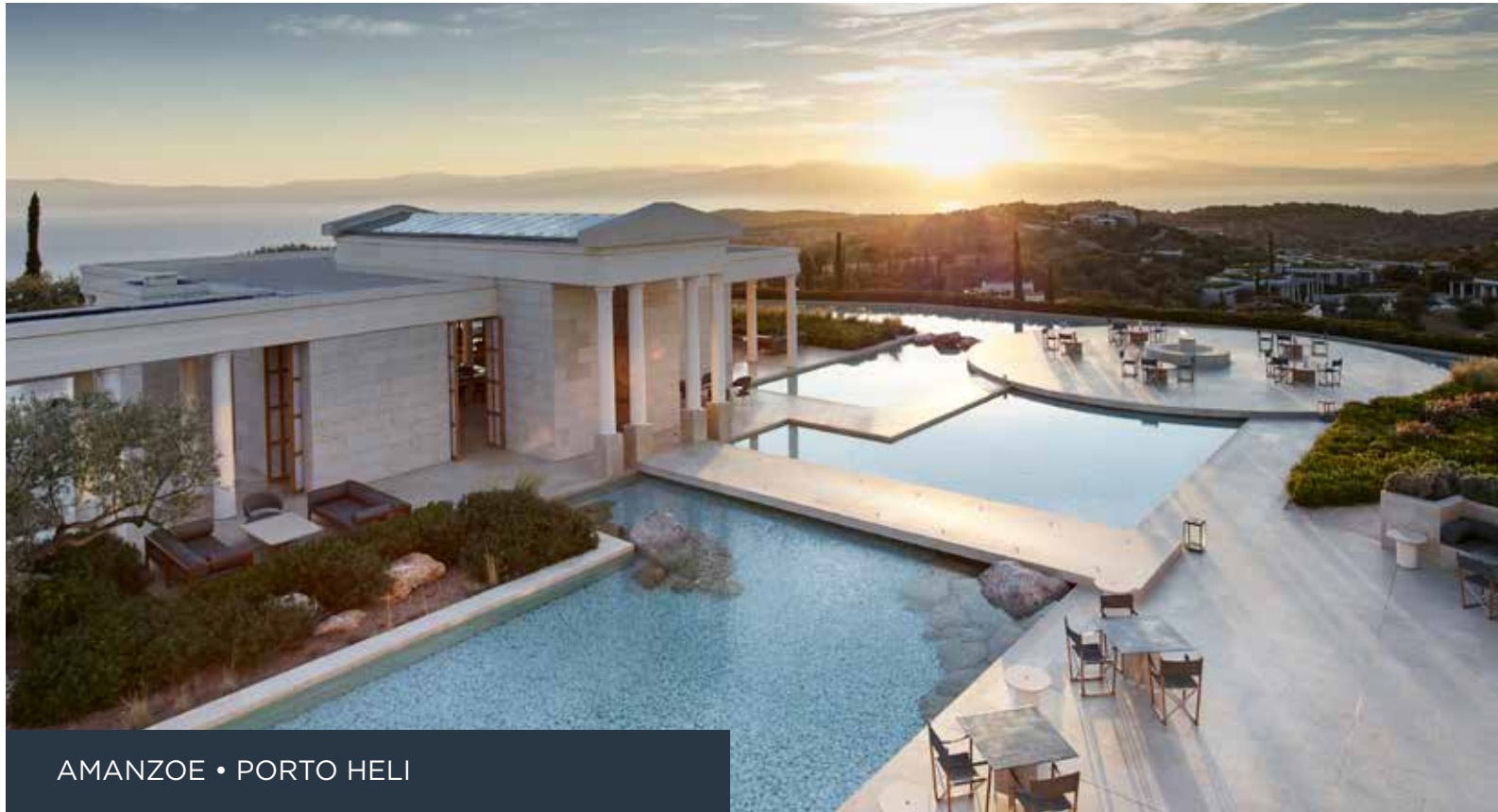


ALWAYS SECURE. ALWAYS THERE FOR YOU

When you choose to have a home at Kilada you choose a lifestyle that lets you decide how much or little you do. From the initial choice of site, planning and development, to our in-villa maid services and professional team of Property Managers, on hand should you need it, it is all up to you. Do everything yourself or nothing at all.

Tend to your gardens planting lavender and tomatoes, or let us take care of your Villa and grounds. Offering full property management services including general upkeep and repairs, gardens and pools maintenance, bills management, housekeeping and laundry, as well as being your private concierge, we are there to ensure the smoothest of arrivals and stress free get-aways.





AMANZOE • PORTO HELI



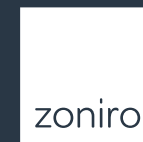
NIKKI BEACH RESORT & SPA • PORTO HELI

EXPERTS IN LUXURY DEVELOPMENT

Making your home at Kilada is a rare opportunity in this exclusive area of the Peloponnese. It is a project of Dolphin Capital, developers of nearby Amanzoe and Nikki Beach Resort & Spa, working in partnership with Zoniro and Arcis.



DOLPHIN
CAPITAL



zoniro



ARCIS GOLF



This is my Kilada

